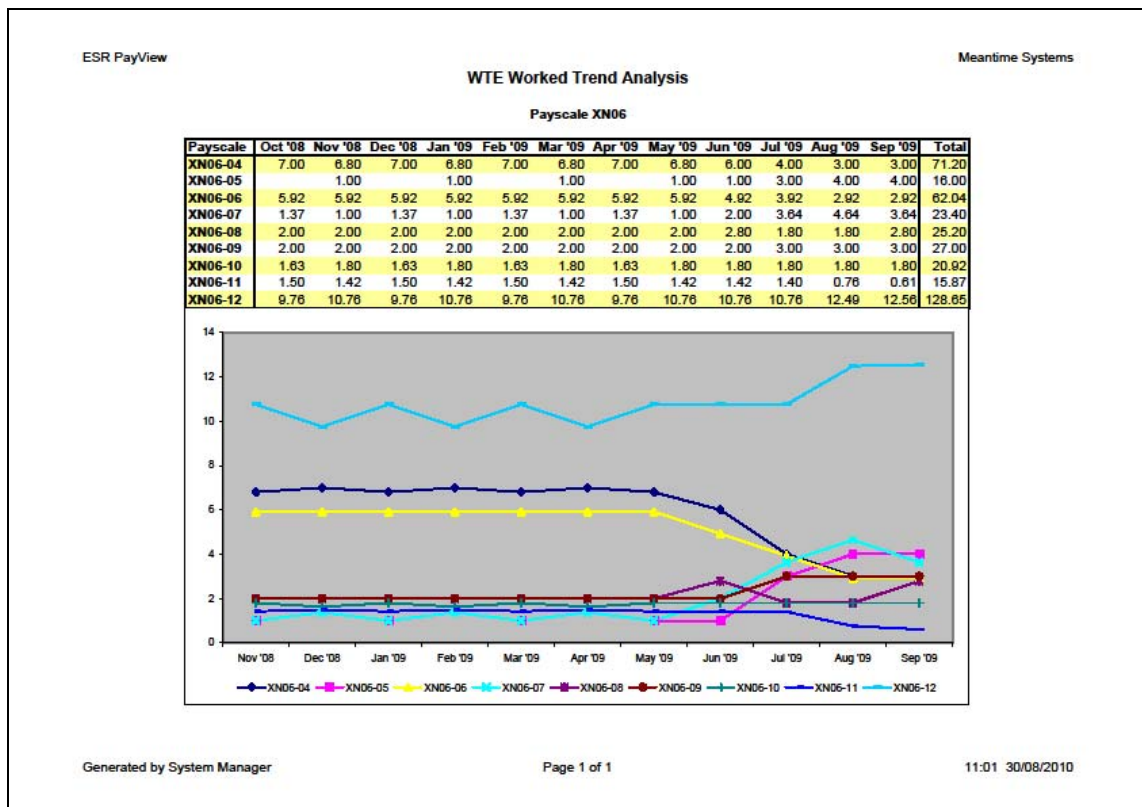


## ESR PayView - Trend Analysis

The Trend Analysis Report is an extremely flexible tool for reporting employee trends over any 12 month period

- WTE or Hours/Sessions
- Worked, Paid and Cost
- Types of cost or Gross Cost
- Whole or parts of organisation
- Summary or Detail
- Occupation Code and Payscale detail
- Drilldown to staff and element detail



(Sample pdf generated by the system)

# ESR PayView - Trend Analysis

Trend Analysis: Enh Hours Amount (excluding Er's costs)

File Help

**Selection**

Financial Year ending March:

Directorate:

Division:

Team:

Level 6:

Cost Centre:

Account Code:

OccCode:

Payscale:

Point:

Assignment:

Person:

Show Gross Cost:

Clear All

**Report**

**Hierarchy**

Directorate: (All)

Division: (All)

Team: (All)

Level 6: (All)

**Cost Centres**

9DIMMY	AAN20	APM10	BZD10	DAD60
DAD69	DAD90	DAD94	DAD95	DAD96
DAD97	DAD98	DAD99	DFD37	DFD39
DFD41	DFD45	DFD48	DFD49	DFD50
DFD51	DFD52	DHR15	DHR16	DHR20
DHR35	DHR38	DHR60	DHR61	DIM40
DIM61	DIM62	DIM63	DIM64	DIM65
DMD15	DMR10	DMR40	DMR41	DMR42
DTB10	DTM30	DTM34	ETC04	ETC05

Run Report

Monthly & Weekly  
 Monthly  
 Weekly

All  
 Substantive  
 Zero Contract Hours

WTE  
 Hours/Sessions  
 Pay Element Type

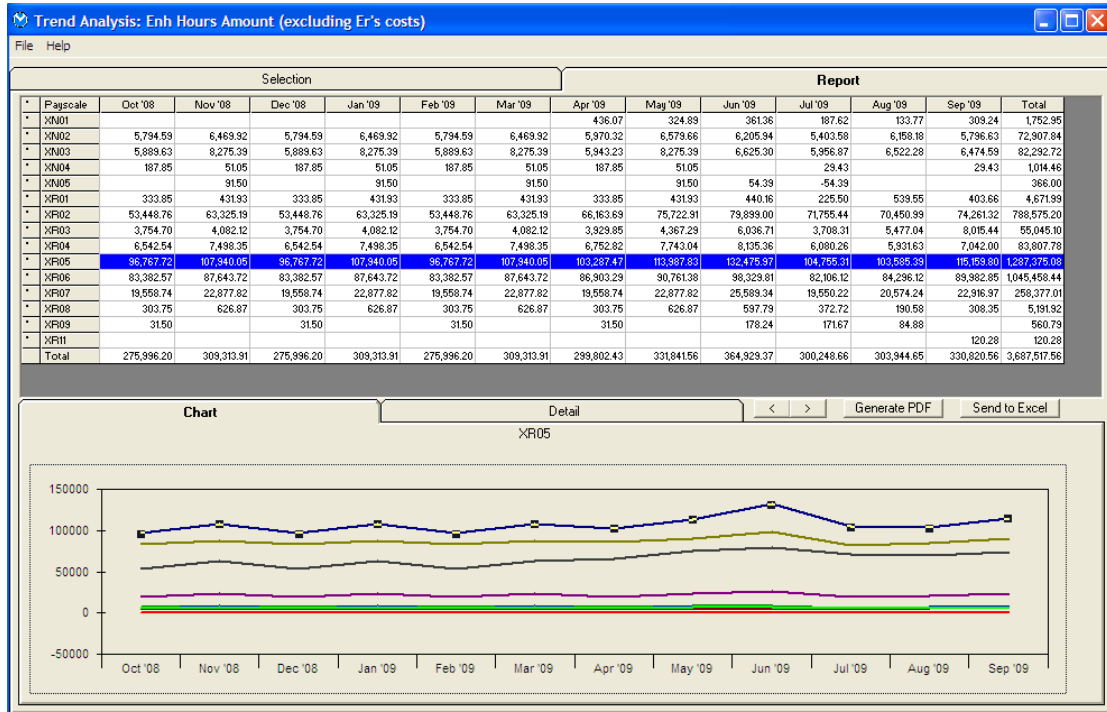
Include Er's Pension & NI Costs with Element

Worked  
 Paid  
 Contracted  
 Amount

Default Report  
 Steve Report  
 Derek Report  
 Heather Report  
 Demo report

Basic Pay  
 Overtime  
 Enh Hours  
 On Call  
 Pension  
 NI  
 Maternity  
 Sick  
 Travel

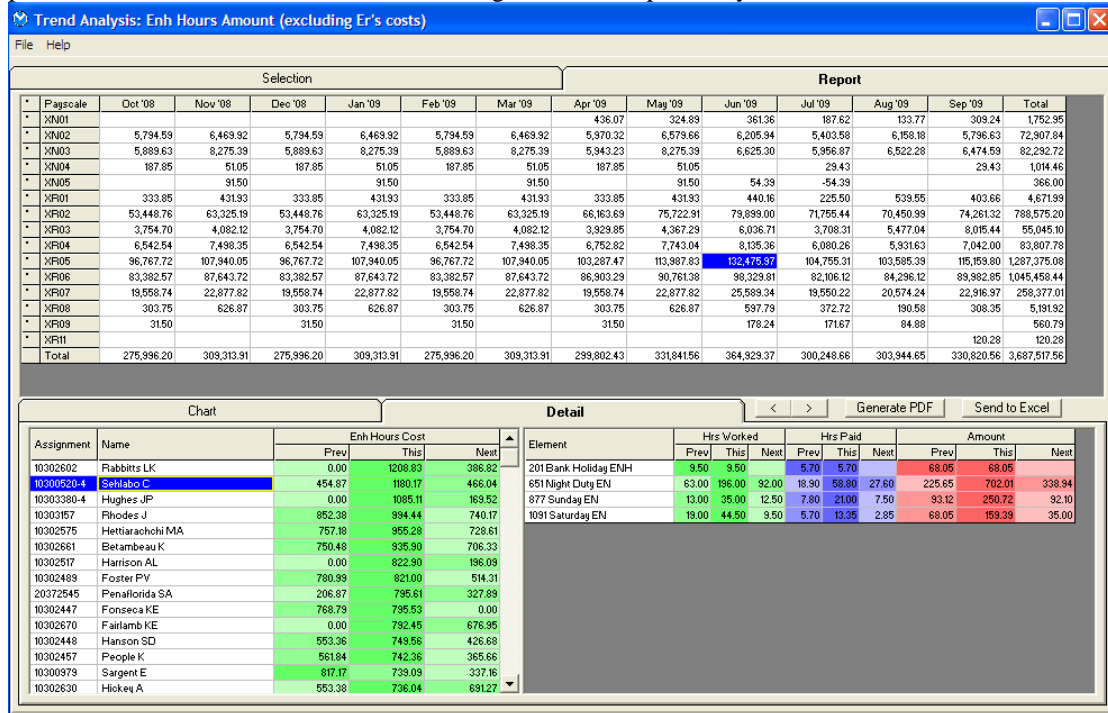
- Enter your required selection criteria
- Tick the boxes on the left to decide level of summary/detail displayed
- Request WTE, Hours or specific types of cost



- View in graphical form to highlight trends

# ESRPayView - Trend Analysis

Click on a point on the graph or a figure on the spreadsheet to drill down to staff figures which include previous month, month selected and following month to help identify variances.



Sort staff detail by any column and select a line to display individual's element detail. Colour and shading assist in identifying higher and lower figures

Example reporting WTE Worked for all Payscales starting with XN and including Gross Cost detail:

